

CWSA Navy G00

Central Washington Soccer Academy
Yakima, WA

G00 total strength=1009

attack=1.61 defense=2.64

fall league = PSPL Classic 2 U13, Spr PSPL CI

notes= McAllister 2013

alt names used:

CWSA G00 Navy McAllister

CWSA - MCALLISTER (WA)

CWSA Academy GU13

CWSA Academy GU13

CWSA G00 Navy McAllister

CWSA - MCALLISTER (WA)

CWSA McAllister

CENTRAL WASHINGTON CWSA G00 NAVY (

Venues played:

Sagebush Classic Girls U13 U13

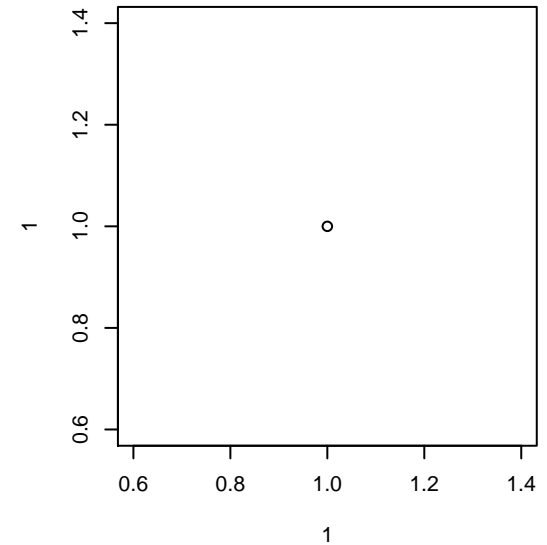
Crossfire Select Cup GU13 Gold

PSPL Classic 2 U13

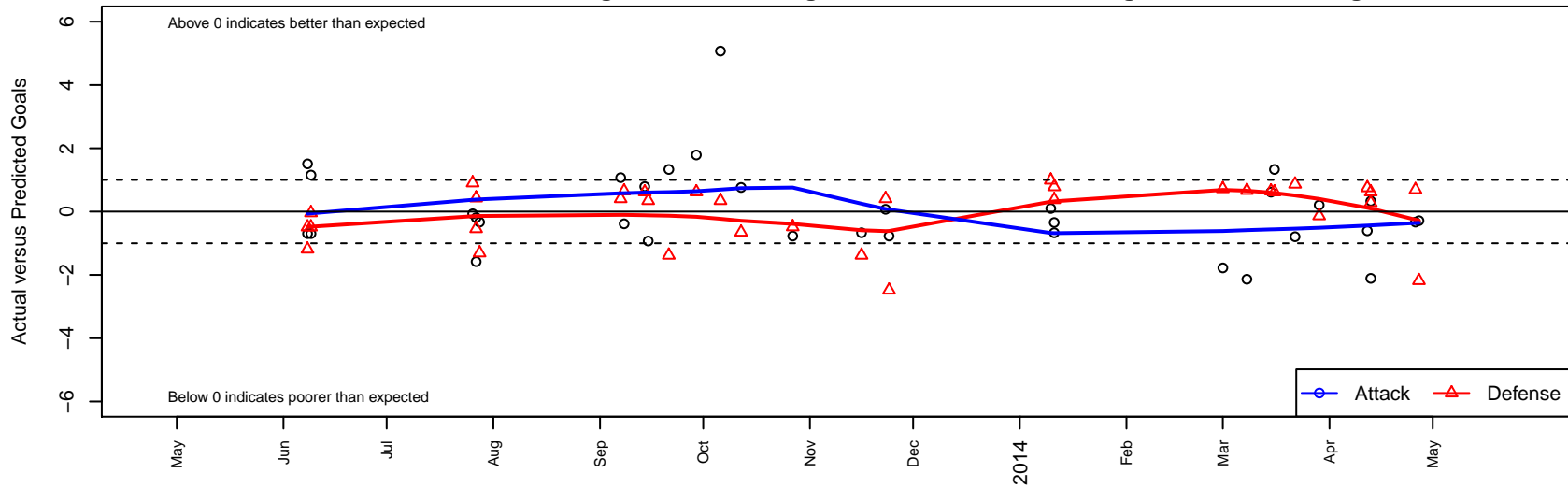
PacNW Winter Classic Premier II U13

Spr PSPL Classic 1 U13

WA Cup GU13 Gold/Silver U13



CWSA Navy G00
Dots are actual minus expected GF (blue circles) and GA (red triangles).
Blue line is smoothed change in attack strength. Red is smoothed change in defense strength.



| | date | home | | away | | venue | pred.home | pred.away |
|-------|-------------|-----------------------------|---|----------------------------|---|-------------------------------------|------------------|------------------|
| 11989 | 2014-04-27 | CWSA Navy G00 | 1 | Cascade FC Green G00 | 3 | WA Cup GU13 Gold/Silver U13 | 1.29 | 0.82 |
| 11967 | 2014-04-26 | PS Slammers Black G00 | 0 | CWSA Navy G00 | 2 | WA Cup GU13 Gold/Silver U13 | 0.69 | 2.33 |
| 11913 | 2014-04-13 | CWSA Navy G00 | 3 | Spokane Foxes -Unk 3 G00 | 0 | WA Cup GU13 Gold/Silver U13 | 5.11 | 0.28 |
| 11915 | 2014-04-13 | Cheney Storm FC G00 | 0 | CWSA Navy G00 | 2 | WA Cup GU13 Gold/Silver U13 | 0.62 | 1.67 |
| 11881 | 2014-04-12 | Wenatchee Fire Black G00 | 1 | CWSA Navy G00 | 0 | WA Cup GU13 Gold/Silver U13 | 1.75 | 0.61 |
| 11732 | 2014-03-29 | CWSA Navy G00 | 1 | Cobra Rapids G00 | 1 | Spr PSPL Classic 1 U13 | 0.79 | 0.86 |
| 11690 | 2014-03-22 | Cobra Rapids G00 | 0 | CWSA Navy G00 | 0 | Spr PSPL Classic 1 U13 | 0.86 | 0.79 |
| 11661 | 2014-03-16 | CWSA Navy G00 | 3 | Cheney Storm FC G00 | 0 | Spr PSPL Classic 1 U13 | 1.67 | 0.62 |
| 11627 | 2014-03-15 | CWSA Navy G00 | 2 | CWSA Grey G00 | 0 | Spr PSPL Classic 1 U13 | 1.39 | 0.65 |
| 11533 | 2014-03-08 | FC Spokane Black G00 | 0 | CWSA Navy G00 | 1 | Spr PSPL Classic 1 U13 | 0.67 | 3.14 |
| 11440 | 2014-03-01 | Spokane Foxes Gold G00 | 0 | CWSA Navy G00 | 0 | Spr PSPL Classic 1 U13 | 0.72 | 1.78 |
| 11095 | 2014-01-11 | CWSA Navy G00 | 1 | Eastside FC Blue G00 | 0 | PacNW Winter Classic Premier II U13 | 1.35 | 0.78 |
| 11099 | 2014-01-11 | CWSA Navy G00 | 0 | WPFC Fury Black G00 | 1 | PacNW Winter Classic Premier II U13 | 0.67 | 1.38 |
| 11074 | 2014-01-10 | Crossfire Premier C G00 | 0 | CWSA Navy G00 | 1 | PacNW Winter Classic Premier II U13 | 0.99 | 0.90 |
| 10918 | 2013-11-24 | LWPFC White Barracudas G00 | 3 | CWSA Navy G00 | 2 | PSPL Classic 2 U13 | 0.52 | 2.77 |
| 10894 | 2013-11-23 | RSA Elite Lynn G00 | 0 | CWSA Navy G00 | 3 | PSPL Classic 2 U13 | 0.41 | 2.93 |
| 10798 | 2013-11-16 | CWSA Navy G00 | 1 | Cheney Storm FC G00 | 2 | PSPL Classic 2 U13 | 1.67 | 0.62 |
| 10478 | 2013-10-27 | CWSA Navy G00 | 2 | LWPFC White Barracudas G00 | 1 | PSPL Classic 2 U13 | 2.77 | 0.52 |
| 10091 | 2013-10-12 | CWSA Navy G00 | 3 | ISC Gunners B G00 | 1 | PSPL Classic 2 U13 | 2.24 | 0.35 |
| 9971 | 2013-10-06 | CWSA Navy G00 | 7 | CSC Velocity Green G00 | 0 | PSPL Classic 2 U13 | 1.93 | 0.35 |
| 9776 | 2013-09-29 | CWSA Navy G00 | 4 | WPFC Fury White G00 | 0 | PSPL Classic 2 U13 | 2.21 | 0.62 |
| 9571 | 2013-09-21 | Cheney Storm FC G00 | 2 | CWSA Navy G00 | 3 | PSPL Classic 2 U13 | 0.62 | 1.67 |
| 9473 | 2013-09-15 | CSC Velocity Green G00 | 0 | CWSA Navy G00 | 1 | PSPL Classic 2 U13 | 0.35 | 1.93 |
| 9405 | 2013-09-14 | WPFC Fury White G00 | 0 | CWSA Navy G00 | 3 | PSPL Classic 2 U13 | 0.62 | 2.21 |
| 9315 | 2013-09-08 | CWSA Grey G00 | 0 | CWSA Navy G00 | 1 | PSPL Classic 2 U13 | 0.65 | 1.39 |
| 9250 | 2013-09-07 | CWSA Navy G00 | 4 | RSA Elite Lynn G00 | 0 | PSPL Classic 2 U13 | 2.93 | 0.41 |
| 8524 | 2013-07-28 | CWSA Navy G00 | 2 | PS Slammers Black G00 | 2 | Crossfire Select Cup GU13 Gold | 2.33 | 0.69 |
| 8480 | 2013-07-27 | Crossfire Select Habash G00 | 0 | CWSA Navy G00 | 0 | Crossfire Select Cup GU13 Gold | 0.43 | 1.58 |

| | date | home | | away | | venue | pred.home | pred.away |
|------|-------------|----------------------------|---|----------------|---|--------------------------------|------------------|------------------|
| 8486 | 2013-07-27 | CWSA Navy G00 | 2 | Newport FC G00 | 1 | Crossfire Select Cup GU13 Gold | 2.19 | 0.46 |
| 8458 | 2013-07-26 | CWSA Navy G00 | 2 | BIFC Blue G00 | 0 | Crossfire Select Cup GU13 Gold | 2.07 | 0.90 |
| 7915 | 2013-06-09 | Three Rivers SC Green G00 | 1 | CWSA Navy G00 | 3 | Sagebush Classic Girls U13 U13 | 0.96 | 1.85 |
| 7916 | 2013-06-09 | Three Rivers SC Black G00 | 2 | CWSA Navy G00 | 0 | Sagebush Classic Girls U13 U13 | 1.51 | 0.70 |
| 7894 | 2013-06-08 | Three Rivers SC Black G00 | 2 | CWSA Navy G00 | 0 | Sagebush Classic Girls U13 U13 | 1.51 | 0.70 |
| 7896 | 2013-06-08 | Eastside Timbers Black G00 | 2 | CWSA Navy G00 | 3 | Sagebush Classic Girls U13 U13 | 0.81 | 1.49 |